

GENETIC RELATIONSHIPS DEDUCED FROM CYTOCHROME-*b* SEQUENCES AMONG MOOSE

Kris J. Hundertmark^{1,2}, Gerald F. Shields^{2,3}, R. Terry Bowyer², and Charles C. Schwartz^{1,4}

¹Alaska Department of Fish and Game, Kenai Moose Research Center, 43961 Kalifornsky Beach Road, Suite B, Soldotna, AK 99669, USA; ²Institute of Arctic Biology and Department of Biology and Wildlife, University of Alaska Fairbanks, Fairbanks, AK 99775, USA

ABSTRACT: We studied variation in nucleotide sequences of the mitochondrial cytochrome-*b* gene to assess the phylogeny of moose (*Alces alces*) in general, and the position of North American moose within that phylogeny in particular. We combined North American, Asian, and European haplotypes generated for this study with 3 Eurasian haplotypes obtained from GenBank. No nucleotide variation occurred within moose from North America, whereas 3 haplotypes were present in European moose and 4 haplotypes in Asian moose. Clade structure was consistent over 6 most-parsimonious trees, with Asian haplotypes composing 1 clade, and North American and European haplotypes composing a second, albeit poorly supported clade. Low diversity of nucleotides in cytochrome-*b* indicated a recent ancestry among moose worldwide. Existence of 1 North American haplotype is strong evidence of a single, recent entry into the New World via the Bering land bridge, rather than multiple entries through >1 corridors. Furthermore, no phylogenetic support existed for the theory of distinct lineages of European versus Asian-North American moose.

ALCES VOL. 38: 113 - 122 (2002)

Key words: *Alces alces*, cytochrome-*b*, genetic diversity, mitochondrial DNA, moose, phylogeography

Moose (*Alces alces*) arose in Eurasia in the late Pleistocene (Lister 1993), but paleontological (Guthrie 1990) and genetic (Cronin 1992) evidence indicate a recent colonization of North America. Such a recent colonization would result in characteristic genetic signatures in mitochondrial DNA (mtDNA), a haploid genome that is transmitted maternally and is informative for constructing population histories of closely related taxa (Avise et al. 1987). Recently colonized areas would be expected to show less genetic diversity than areas with long-established populations, particularly if the effective size of the founding

population was low. Moreover, haplotype composition of a recently founded population would be expected to resemble the composition of the population from which the founders originated. Cronin (1992) analyzed restriction fragment length polymorphisms (RFLP) of mtDNA in North American cervids and reported that moose were unique because they exhibited no detectable variation. There was no comparison to Eurasian moose in that study, however, to determine the degree of difference between moose inhabiting different continents. Therefore, the significance of those findings is difficult to assess.

³Present address: Department of Natural Sciences, Carroll College, Helena, MT 59601, USA

⁴Present address: Forestry Sciences Lab, Montana State University, Bozeman, MT 59717, USA

Eight subspecies of moose are recognized worldwide: *A. a. alces* in Europe and western Asia, *A. a. pfizenmayeri* in central Asia, *A. a. cameloides* in Mongolia, north-western China, and southeastern Russia, *A. a. burturlini* in the Russian Far East, *A. a. gigas* in Alaska, USA and the Yukon Territory, Canada, *A. a. andersoni* in western and central Canada and north-central USA, *A. a. shirasi* in the Rocky Mountains straddling the USA-Canada border, and *A. a. americana* in eastern North America (Fig. 1). Flerov (1952) described morphological variation in moose that distinguished western (Europe-western Asia) from eastern (Asia-North America) races. Groves and Grubb (1987) used those differences as justification for labeling eastern and western moose as “semispecies”. Eastern and western races coincide generally with differences in karyotype (Boeskorov 1996, 1997), and a length mutation in mtDNA (Mikko and Andersson 1995, Udina et al. 2002). Geist (1998) supported the hypoth-

esis of eastern and western races except to specify that the southern Asian subspecies, *A. a. cameloides*, belonged to a primitive regional fauna and could be considered as a valid subspecies. If differences in morphology and karyotype are based on phylogenetic relationships between races of moose, analysis of mtDNA sequences should detect those differences.

Variation within the nucleotide sequence of the mitochondrial cytochrome-*b* gene (*cytb*) has been used successfully to examine intraspecific genetic relationships in North American mammals (Talbot and Shields 1996, Demboski et al. 1998). We chose analysis of mtDNA nucleotide sequences rather than RFLP analysis because the former technique has the potential for yielding phylogenies of higher resolution than the latter (Hillis and Moritz 1990). Accordingly, we analyzed nucleotide variation within a section of *cytb* to examine geographic distribution of genetic variation and to construct a phylogeny for moose.

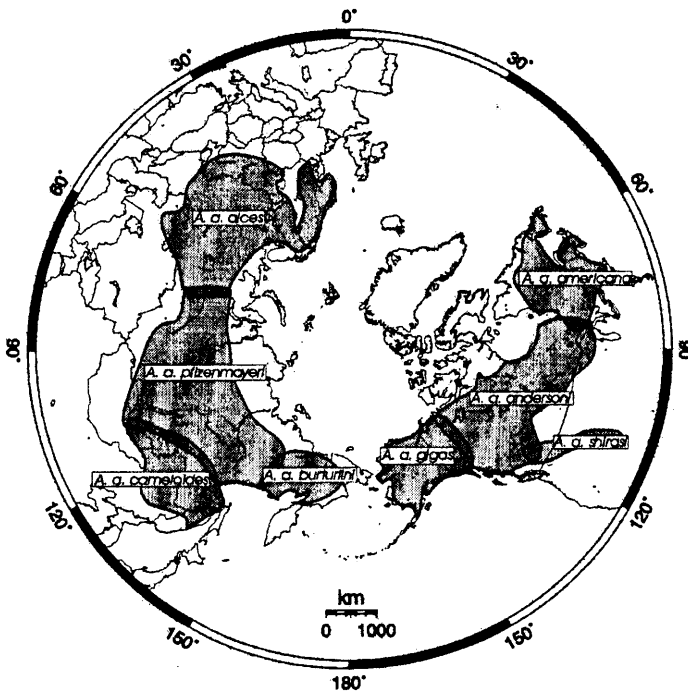


Fig. 1. Polar view of the Northern Hemisphere indicating the approximate distribution of 8 subspecies of moose.

Cytb evolves at a moderate rate in mammals (Irwin et al. 1991, Lopez et al. 1997) and, consequently, often is used in phylogenetic studies of conspecific and congeneric taxa. We used our data to determine if variation within North American moose would be less than variation in Eurasian moose, and if eastern and western races of moose were represented by different lineages of mtDNA.

METHODS

Tissue samples were solicited from moose hunters in Alaska as well as biologists from across North America, Europe, and Asia. Samples were grouped to comprise ≥ 1 population from the range of each North American subspecies, and those populations were combined into continent-level associations. North American subspecies and sampling locations were: *A. a. gigas* ($n = 34$) from across its range in Alaska; *A. a. andersoni* from central North America (USA: Minnesota, North Dakota, Isle Royale in Michigan; Canada: western Ontario and Manitoba; $n = 8$); *A. a. shirasi* from Colorado, USA ($n = 2$); and *A. a. americana* from New Hampshire, USA and New Brunswick, Canada ($n = 7$). The Colorado population originated from 3 translocations of moose from neighboring states: 12 animals (8 females) from the Uinta Mountains, Utah, USA, in 1978, 12 animals (11 females) from Grand Teton National Park, Wyoming, USA, in 1979, and 12 animals (10 females) from Jackson Hole, Wyoming in 1987 (Duvall and Schoonveld 1988). Asian subspecies and sources were: *A. a. burturlini* ($n = 10$), which consisted of animals from the Ola Peninsula near Magadan, and the Omolon and Chelomya Rivers, Russia; *A. a. cameloides*, represented by 1 animal housed at a zoo in Harbin, China, and a sequence from GenBank (accession no. AY035872); and *A. a. pfizenmayeri*, consisting of a se-

quence obtained from GenBank (accession no. AY035873). The European subspecies, *A. a. alces*, consisted of samples collected in Finland ($n = 6$) and Sweden ($n = 6$), as well as a sequence of a moose from Norway obtained from GenBank (accession no. AJ000026; Randi et al. 1998).

Tissue samples consisted of skeletal muscle, liver, kidney, skin, blood, or hair. Tissues were stored temporarily at -20°C or preserved in 100% ethanol as soon as possible after collection and were archived at -80°C . All tissue types except blood were subjected to salt extraction for isolation of genomic DNA. DNA from blood was extracted with chelex (Walsh et al. 1991). MtDNA was isolated from nuclear DNA and RNA from 1 moose by means of a CsCl_2 density-gradient centrifugation. That sample was used to verify the mitochondrial origin of amplified sequences.

We targeted the 5' region of the *cytb* gene for analysis. We amplified the sequence with primers MVZ05 (5'—GCAAGCTTGATATGAAAAACCATCGTTG—3') and MVZ04 (5'—GCAGCCCCTCAGAATGATATTTGTCCTC—3') first described by Smith and Patton (1993). Double-stranded templates were amplified in a reaction mix containing 10 mM Tris-HCl, pH 8.3, 50 mM KCl, 1.5 mM MgCl_2 , 0.2 mM dNTP, 10 mM each primer, and 0.5 units DNA polymerase. Cycling conditions were a 2-min soak at 94°C followed by 30 cycles of 94°C (15 sec) denaturation, 50°C (15 sec) annealing, and 72°C (45 sec) extension, followed by one extension period of 10 min at 72°C . PCR products were visualized on a 6% agarose gel with ethidium bromide staining. Cleaned PCR products were cycle sequenced (both directions) with fluorescing ddNTPs. Nucleotide composition of the final products was determined on an automated sequencer (ABI 373, PE Applied Biosystems, Foster City, CA) with standard protocols supplied by the manu-

facter. Sequences were aligned with the CLUSTAL V algorithm (Higgins et al. 1992) and were edited by visual examination of electropherograms with SEQUENCE NAVIGATOR software (ABI).

We compared nucleotide sequences of individuals and identified sites at which they differed; those data served as the basis for describing individual and population-level variation. Populations also were characterized by haplotype diversity (H), which is the probability that 2 randomly selected individuals would have different haplotypes (Nei and Kumar 2000). Nucleotide diversity (π ; Nei and Li 1979), which is the probability that 2 homologous nucleotides would differ in 2 randomly chosen individuals, and number of pairwise differences, which is the number of nucleotide substitutions observed be-

tween 2 haplotypes, also were determined. Those statistics were estimated with ARLEQUIN software (Schneider et al. 2000). Genetic distances between pairs of populations were computed by applying the Kimura 2-parameter model of sequence evolution (Kimura 1980). Differentiation among all populations was assessed via Φ_{ST} , which incorporates differences in nucleotide and haplotype diversity within and among populations. We analyzed relationships among haplotypes with a maximum parsimony (branch-and-bound search) cladogram, and a neighbor-joining tree (Saitou and Nei 1987) employing 2-parameter distance estimates. Those analyses were performed with the program MEGA version 2.0 (Kumar et al. 2001). Trees were rooted by a haplotype from fallow

Table 1. Nucleotide variation within the first 403 nucleotides of the 5' end of the mitochondrial cytochrome-*b* gene in moose. Only variable nucleotide positions are listed, and dots represent identity with the first sequence. All haplotypes were documented in moose from this study with the exception of Europe3, which was reported by Randi et al. (1998) from Norway. Nucleotide positions were numbered according to the bovine mitochondrial genome (Anderson et al. 1982), with the first nucleotide of cytochrome-*b* numbered 14514. Distributions of haplotypes by sampling location and by subspecies also are indicated.

Haplotype	Continent			Subspecies							Nucleotide position								
	North America	Asia	Europe	<i>A. a. americana</i>	<i>A. a. andersoni</i>	<i>A. a. shirasi</i>	<i>A. a. gigas</i>	<i>A. a. burturlini</i>	<i>A. a. camelooides</i>	<i>A. a. pfitzenmayeri</i>	<i>A. a. alces</i>	14523	14559	14577	14595	14613	14652	14739	14872
North America	55			26	20	2	7					C	T	T	T	T	T	C	C
Asia1		8						7		1		T	C	•	•	•	•	T	•
Asia2		3						1	2			T	C	•	•	•	•	•	•
Asia3		1						1				T	C	•	•	•	C	T	•
Asia4		1						1				T	C	•	•	•	C	•	•
Europe1			4								4	•	•	A	•	•	•	•	T
Europe2			8								8	•	•	A	C	•	•	•	•
Europe3			1								1	•	•	A	C	G	•	•	•

deer (*Dama dama*) obtained from GenBank (accession no. X56290; Irwin et al. 1991), and haplotypes derived for this study from a caribou (*Rangifer tarandus granti*) collected in Alaska (denoted *Rangifer1*) and a reindeer (*R. t. tarandus*) collected in the Omolon River drainage of the Russian Far East (denoted *Rangifer2*). Confidence in the structure of the phylogenies was assessed through 1,000 bootstrap replicates (Felsenstein 1985).

RESULTS

We detected 8 variable sites within the 403 nucleotides of the 5' end of *cytb*, defining 8 haplotypes (Table 1). Six of the variable sites were transitions and 2 were transversions; the transversions were restricted to European haplotypes. The overall transition:transversion ratio was 7:1 including outgroups and 3:1 for moose only. Six variable sites, including 1 transversion, were synonymous substitutions at the third position of codons, resulting in no substitutions of amino acids in the gene product. In haplotype Europe3, however, 1 transversion occurred at the third position of the

thirty-third codon and resulted in the substitution of the amino acid phenylalanine with leucine. The remaining substitution was a synonymous, first-position transition in Europe1. All new haplotypes described in this study, including 2 outgroup haplotypes, were submitted to GenBank and were assigned accession numbers AY090099–AY090107.

We documented an extreme degree of differentiation among continents ($\Phi_{ST} = 0.89$), with no haplotype occurring on > 1 continent (Table 1). We identified 4 Asian, 3 European, and 1 North American haplotypes. Pairwise differences among haplotypes ranged from 1 to 7 substitutions, and associated estimates of genetic distances ranged from 0.2 to 1.8% (Table 2). Estimates of mean (\pm SD) haplotype diversity for Europe ($H = 0.60 \pm 0.13$) and Asia ($H = 0.56 \pm 0.11$) were similar, as were estimates of nucleotide diversity for haplotypes occurring within those continents (Table 3). The least genetic distance between continents was the comparison between Europe and North America, and the greatest was between Europe and Asia. Europe exhibited the greatest within conti-

Table 2. Genetic distances between pairs of haplotypes for a 403-nucleotide segment of the moose cytochrome-*b* gene. Values above the diagonal are total numbers of substitutions, and those below the diagonal are estimates of substitutions per site using Kimura's (1980) 2-parameter model.

	North America	Asia1	Asia2	Asia3	Asia4	Europe1	Europe2	Europe3
North America		3	2	4	3	2	2	3
Asia1	0.008		1	1	2	5	5	6
Asia2	0.005	0.002		2	1	4	4	5
Asia3	0.010	0.002	0.005		1	6	6	7
Asia4	0.008	0.005	0.002	0.002		5	5	6
Europe1	0.005	0.013	0.010	0.015	0.013		2	3
Europe2	0.005	0.013	0.010	0.015	0.016	0.005		1
Europe3	0.007	0.015	0.013	0.018	0.015	0.007	0.002	

Table 3. Uncorrected distances between continental assemblages of moose haplotypes estimated with cytochrome-*b* (below diagonal). Values in bold along the diagonal are estimates of nucleotide diversity within those assemblages. Kimura's (1980) 2-parameter model of sequence evolution was used in all calculations.

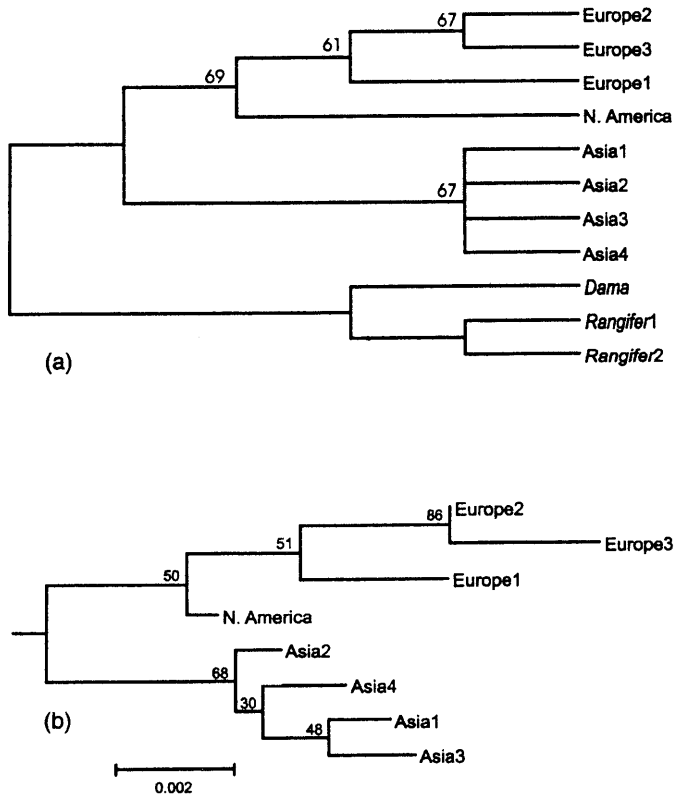
	North America	Asia	Europe
North America	0.000		
Asia	0.007	0.002	
Europe	0.005	0.012	0.003

gent diversity (Table 3).

Haplotype diversity differed among subspecies (Table 1). Although extensive sampling among the 4 North American subspecies did not yield nucleotide diversity, the Eurasian subspecies for which we had >2 samples exhibited great diversity of haplotype composition. *A. a. burturlini* exhibited 4 haplotypes among 10 individuals, and *A. a. alces* exhibited 3 haplotypes among 13 individuals (Table 1). The 2 individuals from *A. a. cameloides* and the single individual from *A. a. pfizenmayeri* exhibited haplotypes that were present in *A. a. burturlini*.

Six most-parsimonious trees were re-

Fig. 2. Phylogenetic trees representing relationships among cytochrome-*b* haplotypes for moose worldwide: (a) strict consensus cladogram from maximum parsimony, showing only those clades that were represented in all most parsimonious trees - numbers listed at nodes represent percent support for that node from 1,000 bootstrap replicates: (b) neighbor-joining phylogram, with bootstrap support indicated at nodes.



or the presence of female-mediated gene flow and provided no evidence of an extreme temporal separation of *A. a. cameloides* from other Asian subspecies. Finally, our data indicate a single entry of moose into North America from Asia, and do not support a fundamental division of moose into European and Asian-North American clades.

ACKNOWLEDGEMENTS

Funding for this research was provided by Federal Aid in Wildlife Restoration, The Boone and Crockett Club, and the Institute of Arctic Biology, University of Alaska Fairbanks (UAF). The core DNA sequencing facility at UAF was funded by the National Science Foundation. We thank all the biologists that submitted tissue samples for this research. The manuscript benefited from reviews by M. A. Cronin and an anonymous reviewer.

REFERENCES

- ANDERSON, S., M. S. DE BRUIJN, A. R. COULSON, I. C. EPERON, F. SANGER, and I. G. YOUNG. 1982. Complete sequence of the bovine mitochondrial genome. *Journal of Molecular Biology* 156:683-717.
- AVISE, J. C., J. ARNOLD, R. M. BALL, JR., E. BERMINGHAM, T. LAMB, J. E. NEIGEL, C. A. REEB, and N. C. SAUNDERS. 1987. Intraspecific phylogeography: the mitochondrial DNA bridge between population genetics and systematics. *Annual Review of Ecology and Systematics* 18:489-522.
- BACCUS, R., N. RYMAN, M. H. SMITH, C. REUTERWALL, and D. CAMERON. 1983. Genetic variability and differentiation in large grazing mammals. *Journal of Mammalogy* 64:109-120.
- BOESKOROV, G. G. 1996. Karyotype of moose (*Alces alces* L.) from north-eastern Asia. *Proceedings of the Russian Academy of Sciences* 329:506-508. (In Russian).
- _____. 1997. Chromosomal differences in moose. *Genetika* 33:974-978. (In Russian).
- CRONIN, M. A. 1992. Intraspecific variation in mitochondrial DNA of North American cervids. *Journal of Mammalogy* 73:70-82.
- DEMBOSKI, J. R., B. K. JACOBSEN, and J. A. COOK. 1998. Implications of cytochrome-*b* sequence variation for biogeography and conservation of the northern flying squirrel (*Glaucomys sabrinus*) of the Alexander Archipelago. *Canadian Journal of Zoology* 76:1771-1777.
- DUVALL, A. C., and G. S. SCHOONVELD. 1988. Colorado moose: reintroduction and management. *Alces* 24:188-194.
- FELSENSTEIN, J. 1985. Confidence limits on phylogenies: an approach using the bootstrap. *Evolution* 39:783-791.
- FLEROV, K. K. 1952. Fauna of USSR: mammals. Volume I Number. 2. Musk deer and deer. The Academy of Sciences of the USSR, Leningrad. (English translation by The Israel Program for Scientific Translation, 1960, S. Monson, Jerusalem).
- GEIST, V. 1998. Deer of the world: their evolution, behavior, and ecology. Stackpole Books, Mechanicsburg, Pennsylvania, USA.
- GROVES, C. P., and P. GRUBB. 1987. Relationships of living deer. Pages 3-59 in C. M. Wemmer, editor. *Biology and management of the Cervidae*. Smithsonian Institution Press, Washington, D.C., USA.
- GUTHRIE, R. D. 1966. The extinct wapiti from Alaska and Yukon Territory. *Canadian Journal of Zoology* 44:47-57.
- _____. 1990. New dates in Alaskan Quaternary moose, *Cervalces-Alces* —

- archaeological, evolutionary and ecological implications. *Current Research in the Pleistocene* 7:111-112.
- HIGGINS, D.G., A. J. BLEASBY, and R. FUCHS. 1992. CLUSTAL V: improved software for multiple sequence alignment. *Computer Applications in the Biosciences* 8:189-191.
- HILLIS, D. M., and C. MORITZ. 1990. An overview of applications of molecular systematics. Pages 502-515 in D. M. Hillis and C. Moritz, editors. *Molecular Systematics*. Sinauer, Sunderland, Massachusetts, USA.
- HUNDERTMARK, K. J., P. E. JOHNS, and M. H. SMITH. 1992. Genetic diversity of moose from the Kenai Peninsula, Alaska. *Alces* 28:15-20.
- , G. F. SHIELDS, I. G. UDINA, R. T. BOWYER, A. A. DANILKIN, and C. C. SCHWARTZ. 2002. Mitochondrial phylogeography of moose (*Alces alces*): late Pleistocene divergence and population expansion. *Molecular Phylogenetics and Evolution* 22:375-387.
- IRWIN, D. M., T. D. KOCHER, and A. C. WILSON. 1991. Evolution of the cytochrome-*b* gene in mammals. *Journal of Molecular Evolution* 32:128-144.
- KIMURA, M. 1980. A simple method for estimating evolutionary rates of base substitutions through comparative studies of nucleotide sequences. *Journal of Molecular Evolution* 16:111-120.
- KUMAR, S., K. TAMURA, I. B. JAKOBSEN, and M. NEI. 2001. MEGA2: Molecular Evolutionary Genetic Analysis software. *Bioinformatics* 17:1244-1245.
- KUWAYAMA, R., and T. OZAWA. 2000. Phylogenetic relationships among European red deer, wapiti, and sika deer inferred from mitochondrial DNA sequences. *Molecular Phylogenetics and Evolution* 15:115-123.
- LISTER, A. M. 1993. Evolution of mammoths and moose: the Holarctic perspective. Pages 178-204 in A. D. Barnosky, editor. *Quaternary mammals of North America*. Cambridge University Press, Cambridge, U. K.
- LOPEZ, J. V., M. CULVER, J. C. STEPHENS, W. E. JOHNSON, and S. J. O'BRIEN. 1997. Rates of nuclear and cytoplasmic mitochondrial DNA sequence divergence in mammals. *Molecular Biology and Evolution* 14:277-286.
- MIKKO, S., and L. ANDERSSON. 1995. Low major histocompatibility complex class II diversity in European and North American moose. *Proceedings of the National Academy of Sciences of the USA* 92:4259-4263.
- NEI, M., and S. KUMAR. 2000. *Molecular evolution and phylogenetics*. Oxford University Press, New York, New York, USA.
- , and W.-H. LI. 1979. Mathematical models for studying genetic variation in terms of restriction endonucleases. *Proceedings of the National Academy of Sciences of the USA* 76:5269-5273.
- RANDI, E., N. MUCCI, M. PIERPAOLI, and E. DOUZERY. 1998. New phylogenetic perspectives on the Cervidae (Artiodactyla) are provided by the mitochondrial cytochrome-*b* gene. *Proceedings of the Royal Society of London, Series B* 265:793-801.
- RYMAN, N., C. REUTERWALL, K. NYGREN, and T. NYGREN. 1980. Genetic variation and differentiation in Scandinavian moose (*Alces alces*): are large mammals monomorphic? *Evolution* 34:1037-1049.
- SAITOU, N., and M. NEI. 1987. The neighbor-joining method: a new method for reconstructing phylogenetic trees. *Molecular Biology and Evolution* 4:406-425.
- SCHNEIDER, S., J.-M. KUEFFER, D. ROESSLI, and L. EXCOFFIER. 2000. ARLEQUIN ver

- 2.000: A software for population genetic analysis. Genetics and Biometry Laboratory, University of Geneva, Switzerland.
- SMITH, M. F., and J. L. PATTON. 1993. The diversification of South American murid rodents: evidence from mitochondrial DNA sequence data of the akodontine tribe. *Biological Journal of the Linnean Society* 50:149-177.
- TALBOT, S. L., and G. F. SHIELDS. 1996. Phylogeography of brown bears (*Ursus arctos*) of Alaska and paraphyly within the Ursidae. *Molecular Phylogenetics and Evolution* 5:477-494.
- UDINA, I. G., A. A. DANILKIN, and G. G. BOESKOROV. 2002. Genetic diversity of moose (*Alces alces* L.) in Eurasia. *Genetika* 38:951-957. (In Russian).
- WALSH, P.S., D. A. METZGER, and R. HIGUCHI. 1991. Research report: chelex 100 as a medium for simple extraction of DNA for PCR-based typing from forensic material. *BioTechniques* 10:506-513.
- WILHELMSON, M., R. K. JUNEJA, and S. BENGTTSSON. 1978. Lack of polymorphism in certain blood proteins and enzymes of European and Canadian moose (*Alces alces*). *Naturaliste Canadien* 105:445-449.