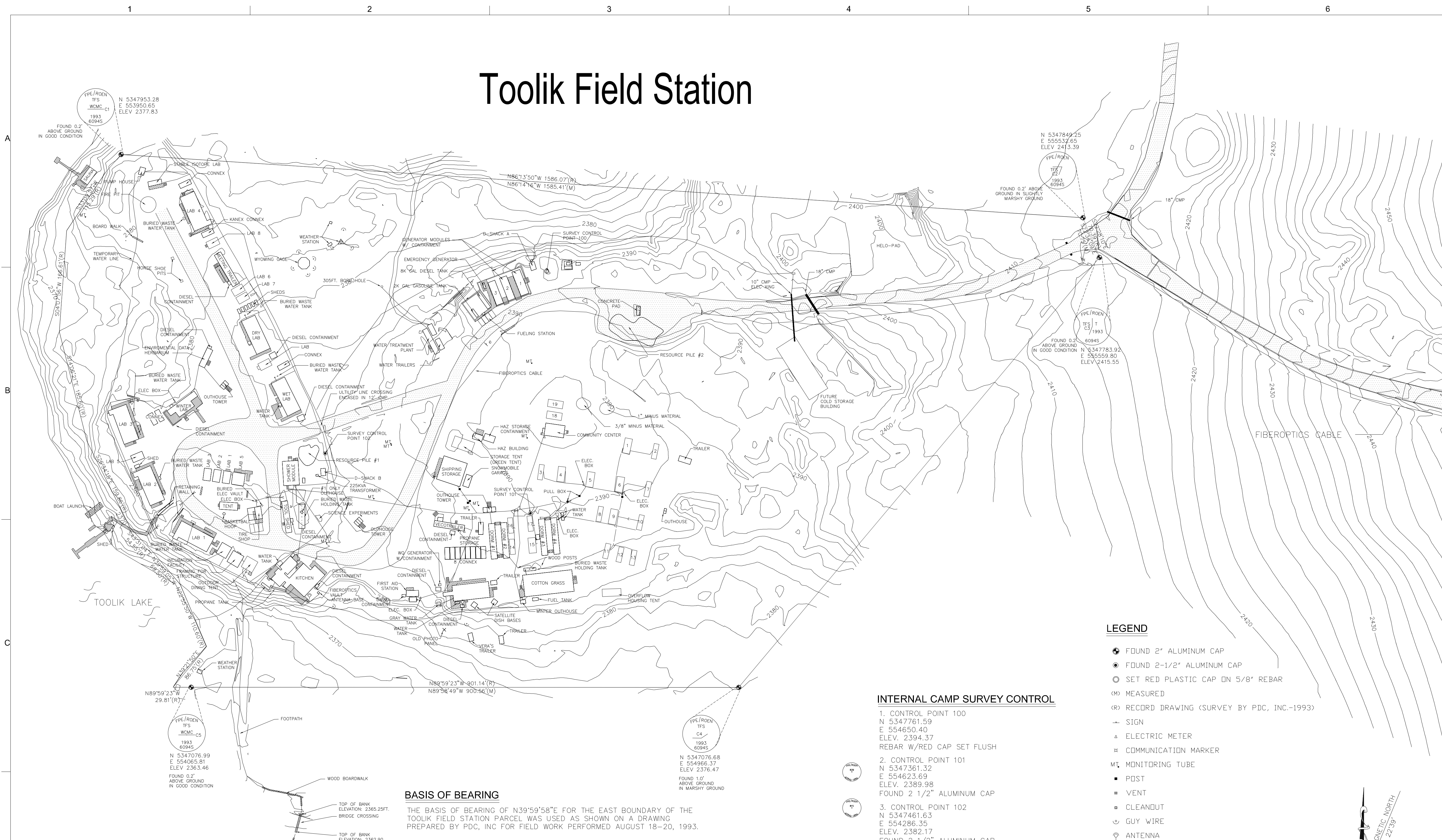


Toolik Field Station



LEGEND

- FOUND 2" ALUMINUM CAP
- FOUND 2-1/2" ALUMINUM CAP
- SET RED PLASTIC CAP DN 5/8" REBAR
- (M) MEASURED
- (R) RECORD DRAWING (SURVEY BY PDC, INC.-1993)
- SIGN
- △ ELECTRIC METER
- ⊠ COMMUNICATION MARKER
- MT. MONITORING TUBE
- POST
- ⊛ VENT
- CLEANOUT
- ⊙ GUY WIRE
- ⊕ ANTENNA
- DISCHARGE
- CULVERT
- ABOVE GROUND WATER
- ABOVE GROUND ELECTRIC
- ABOVE GROUND SEWER
- ABOVE GROUND COMMUNICATION
- ▨ GRAVEL
- ▩ WOOD DECK

INTERNAL CAMP SURVEY CONTROL

1. CONTROL POINT 100
N 5347761.59
E 554650.40
ELEV. 2394.37
REBAR W/RED CAP SET FLUSH
2. CONTROL POINT 101
N 5347361.32
E 554623.69
ELEV. 2389.98
FOUND 2 1/2" ALUMINUM CAP
3. CONTROL POINT 102
N 5347461.63
E 554286.35
ELEV. 2382.17
FOUND 2 1/2" ALUMINUM CAP

BASIS OF BEARING

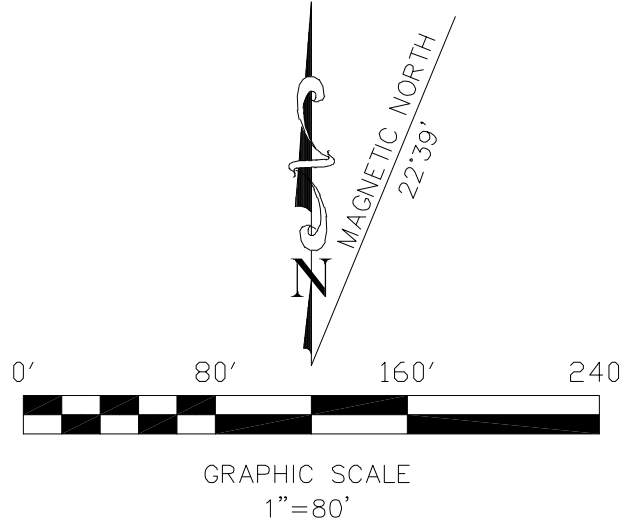
THE BASIS OF BEARING OF N39°59'58"E FOR THE EAST BOUNDARY OF THE TOOLIK FIELD STATION PARCEL WAS USED AS SHOWN ON A DRAWING PREPARED BY PDC, INC FOR FIELD WORK PERFORMED AUGUST 18-20, 1993.

BASIS OF VERTICAL CONTROL

BASIS OF VERTICAL CONTROL IS FROM ELEVATIONS PROVIDED BY THE UNIVERSITY OF ALASKA FAIRBANKS FOR THE CABLE TRAYS NEAR THE WET LAB AND DRY LAB STRUCTURES.

BASIS OF HORIZONTAL CONTROL

BASIS OF COORDINATES IS THE NORTHERN MONUMENT USED FOR THE BASIS OF BEARING. COORDINATES SHOWN ON THE DRAWING PREPARED BY PDC, INC FOR FIELD WORK PERFORMED AUGUST 18-20, 1993 WERE USED. COORDINATES ARE REFERENCED TO THE NAD 27 (ZONE 4) DATUM AND ARE IN U.S. SURVEY FEET.



NO	DATE	DESCRIPTION	APVR	BY	APVD
			N		

ENGINEER	DR	CHECKED-BY	APVD	APPROVED-BY

TOOLIK LAKE CAMP, ALASKA
MAIN CAMP
JULY 2008

CH2MHILL
 Polar Services

VERIFY SCALE
 BAR IS ONE INCH ON ORIGINAL DRAWING.

DATE	OCTOBER 2008
PROJ	367081
DWG	DRAWING-NO
SHEET	SHEET-NO

REUSE OF DOCUMENTS: THIS DOCUMENT, AND THE IDEAS AND DESIGNS INCORPORATED HEREIN, AS AN INSTRUMENT OF PROFESSIONAL SERVICE IS THE PROPERTY OF CH2M HILL AND IS NOT TO BE USED, IN WHOLE OR IN PART, FOR ANY OTHER PROJECT WITHOUT THE WRITTEN AUTHORIZATION OF CH2M HILL. © CH2M HILL 2004. ALL RIGHTS RESERVED.